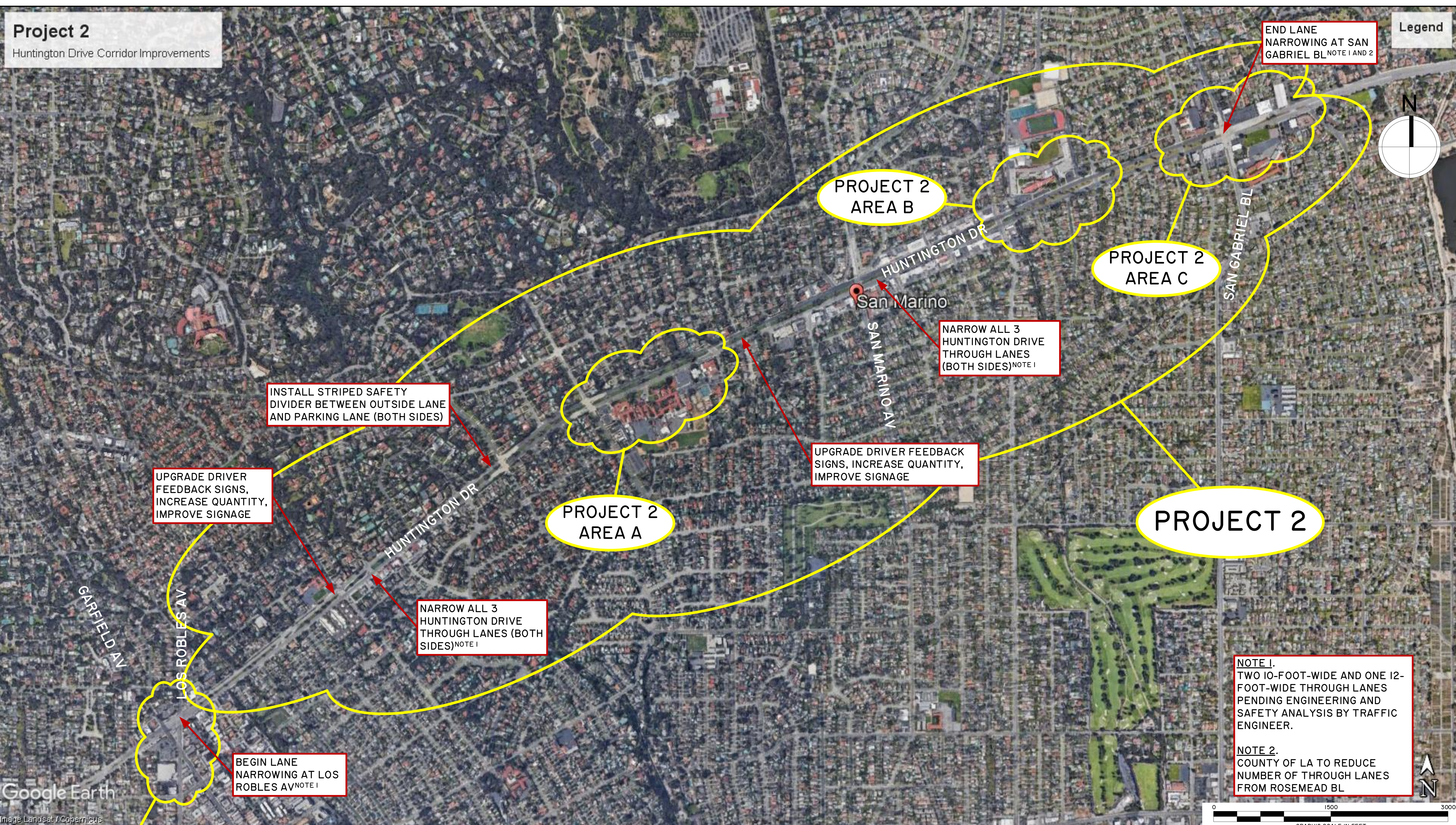


Project 2
Huntington Drive Corridor Improvements

Legend



UPGRADE DRIVER FEEDBACK SIGNS, INCREASE QUANTITY, IMPROVE SIGNAGE

INSTALL STRIPED SAFETY DIVIDER BETWEEN OUTSIDE LANE AND PARKING LANE (BOTH SIDES)

NARROW ALL 3 HUNTINGTON DRIVE THROUGH LANES (BOTH SIDES)^{NOTE 1}

UPGRADE DRIVER FEEDBACK SIGNS, INCREASE QUANTITY, IMPROVE SIGNAGE

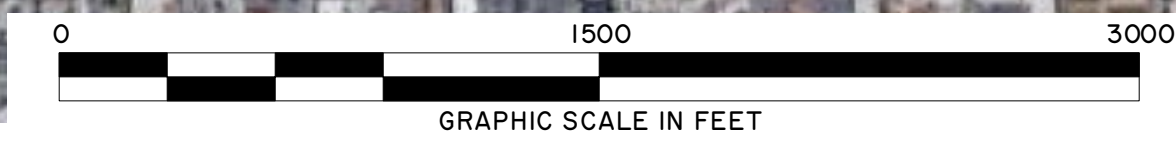
NARROW ALL 3 HUNTINGTON DRIVE THROUGH LANES (BOTH SIDES)^{NOTE 1}

END LANE NARROWING AT SAN GABRIEL BL^{NOTE 1 AND 2}

BEGIN LANE NARROWING AT LOS ROBLES AV^{NOTE 1}

NOTE 1.
TWO 10-FOOT-WIDE AND ONE 12-FOOT-WIDE THROUGH LANES PENDING ENGINEERING AND SAFETY ANALYSIS BY TRAFFIC ENGINEER.

NOTE 2.
COUNTY OF LA TO REDUCE NUMBER OF THROUGH LANES FROM ROSEMEAD BL



Google Earth
Image Landsat / Copernicus

PROJECT 1

PROJECT 2 - POTENTIAL CORRIDOR REFINEMENTS TO HUNTINGTON DRIVE FROM LOS ROBLES AV TO SAN GABRIEL BL

| | | |
|-----------------------------------|---|---------|
| NO. | ISSUED FOR CITY COUNCIL WORKSHOP | 9/17/19 |
| A | ISSUED FOR PUBLIC SAFETY COMMISSION MTG | 8/12/19 |
| | REVISIONS | DATE |
| PARKS AND PUBLIC WORKS DEPARTMENT | | |
| PROJECT | MEASURE R 710 NORTH | |
| | PROJECT 2 | |
| | HUNTINGTON DRIVE CORRIDOR IMPROVEMENTS | |
| SCALE | DATE | SHEET |
| AS NOTED | SEPTEMBER 2019 | OF |